



# Bus Lines

## Schedule Changes Sunday, June 28

**Routes 12, 14, 21, 31, 51,  
52, 56, 57, 60, 67, 80 and  
PurpleLine.**

Check buses for schedules  
Monday, June 22 or see  
previews at [RideMCTS.com](http://RideMCTS.com)  
starting June 18.

## Transit Facts

- **Every \$1 invested in public transportation generates \$4 in economic returns.**
- **A total of 87 percent of trips on public transit have a direct impact on the local economy.**

**Inside: New Buses  
| Be Counted!  
| Red Flags to  
Know**

## Thank You to Our Customers!

MCTS appreciates the support of our customers and community during the Coronavirus Disease (COVID-19) public health emergency. The past three months required a number of changes to how we operate to keep our employees and passengers safe. As an essential service, we know many of you relied on us to get to work, grocery stores, pharmacies, and medical appointments. Thank you for your patience as we modified our service to keep everyone safe. and working with us to make sure we all arrive safe.

## Milwaukee County Opens for Business



When businesses start to reopen, people will resume travel to places they need to go and want to visit. As we continue to fight the spread of COVID-19, here is what you can expect when you ride with MCTS. The following information is subject to change; always visit [RideMCTS.com](http://RideMCTS.com) for the latest.

- All passengers should enter through the front door, pay their fares and then move away from the farebox and the driver.
- While cash is allowed, the use of contactless fare forms, like the M-CARD and Ride MCTS app, and other cards is strongly encouraged. Please limit conversation and interaction with the driver. Allow for extra travel time. If a bus has 10 people on board, the driver will not pick up additional riders. To reduce wait times, MCTS will monitor bus loads and add extra buses when possible.

### Before you board:

- ▶ **Please wear a mask.**
- ▶ **Cover your coughs and sneezes and wash your hands often.**
- ▶ **Stay home if you're sick.**
- ▶ **No loitering!**

All of the above information about policies related to COVID-19 are subject to change. Visit [RideMCTS.com](http://RideMCTS.com) for the latest information.

# New Buses Arrive This Summer

Be on the lookout for the latest additions to our MCTS Fleet! Twenty-three (23) new GILLIG clean-diesel buses have started to arrive in Milwaukee and will continue to enter service through the summer. The vehicles, labeled #6000 and above, were built in California and are making a five-day, 2,200-mile road trip to Wisconsin.

The buses are similar to the #5900-series vehicles that we welcomed last year. They include notable features like improved fuel economy, lower emissions, optimized driver visibility, anti-slip flooring, easier-to-read digital display signs, heated side mirrors, and a stainless-steel understructure designed to reduce salt corrosion.



**Watch for these beauties on a route near you!**

## Summer Service Suspended to Lakefront Festivals

When it comes to celebrating summer and the people who make Milwaukee County great, everyone's favorite destination is Henry Maier Festival Park. To prevent the further spread of COVID-19, the festivals that called Lake Michigan home each decided to postpone or cancel their events until 2021. Therefore, MCTS will not have any Festival Shuttles or Freeway Flyers to these events this season. We invite you to celebrate Milwaukee's diversity through virtual visits or in-person visits to local cultural attractions.



## Summerfest and Wisconsin State Fair ... We'll See You Next Year!

MCTS looks forward to transporting riders to and from Summerfest and the Wisconsin State Fair when both return in 2021!



# WISCONSIN STATE FAIR

**When music returns to Milwaukee's lakefront, rock and roll with us - MCTS!**



# Be Counted and Help Milwaukee County!

Every 10 years, the U.S. Census gives us a “snapshot” of who we are. Its results are used by lawmakers, business owners and many others to make critical decisions.

By answering the 2020 U.S. Census, you will help Milwaukee County get federal funding for more than 100 programs, like money to support neighborhoods, schools and public transportation.

Take the 2020 U.S. Census Survey online, by phone or mail in your responses. Due to COVID-19, the U.S. Census Bureau has extended the deadline to turn in your responses through October 31.

## How to respond:



Online: **MyCensus2020.gov**, use your computer, smartphone, or tablet.



Telephone: To begin, call **844-330-2020**.  
En Español, llámá **844-468-2020**.



Mail: Earlier this spring, all residences got a paper questionnaire in the mail. **Answer the questions and send it back in the postage paid envelope.** If you responded online or by the phone already, you do not need to mail your form.

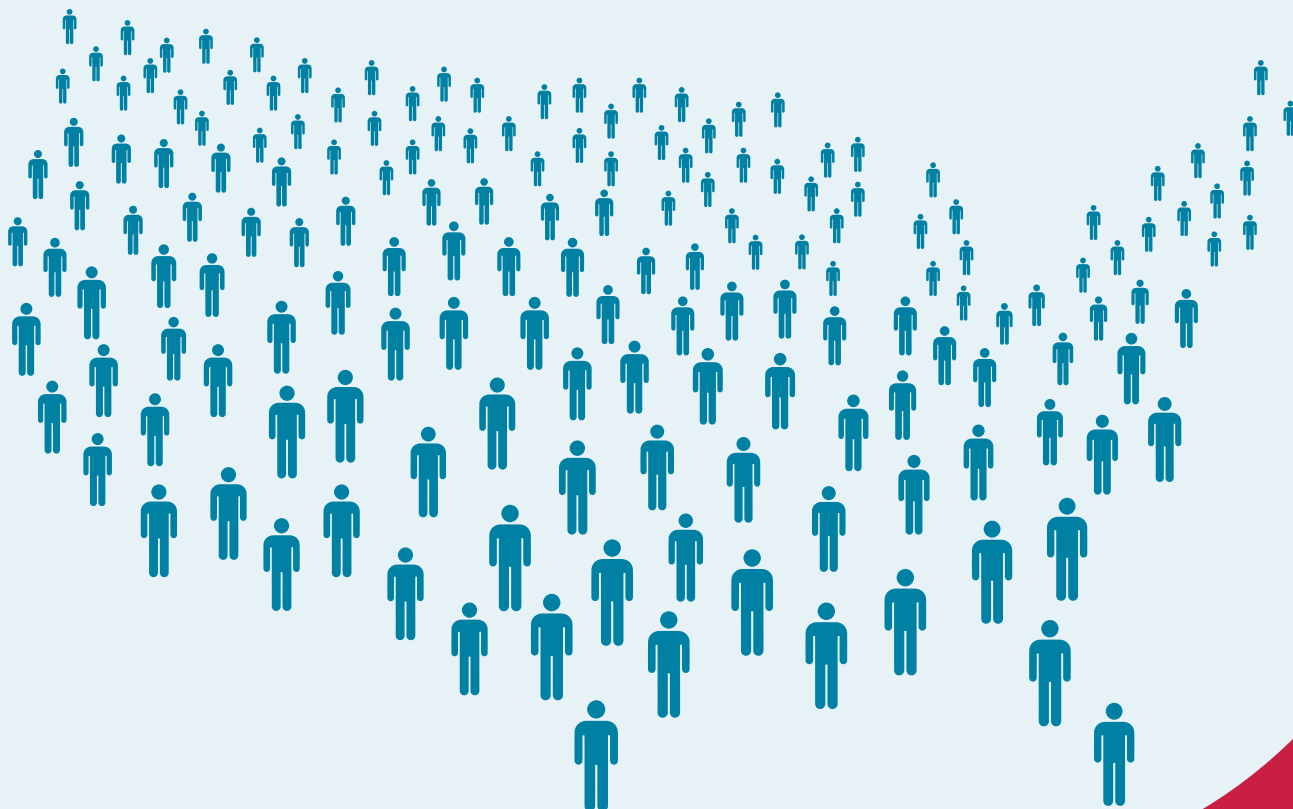
# What the U.S. Census Is and Is Not:

## WHAT THE U.S. CENSUS IS

- ▶ The 2020 Census counts everyone living in the country, including non-citizens.
- ▶ Your answers are only used to create statistics about our country.
- ▶ The Census Bureau is bound by Title 13 of the U.S. Code to protect your personal information and keep it strictly confidential.

## WHAT THE CENSUS IS NOT

- ▶ The 2020 Census does not ask whether you or anyone in your home is a U.S. citizen.
- ▶ Your answers cannot be used to impact your eligibility for government benefits.
- ▶ By law, the Census Bureau does not share your information with law enforcement.



# If It Doesn't Look Right, Say Something

Human trafficking happens all around us, every day of the year. And, when high-profile conventions or sporting events bring thousands of people to a city like Milwaukee, human trafficking increases.

Human trafficking involves the use of force, fraud, or coercion to obtain labor or commercial sex acts. Victims can be anyone from any background, around the world or next door: women and men, adults and children, citizens and non-citizens. You can find it in big cities and small, rural towns.

Any minor (under the age of 18) engaged in commercial sex is a victim of human trafficking according to Federal law, regardless of whether there is force, fraud, or coercion.

MCTS is working with several local groups and organizations to bring more awareness of this issue. Public transportation, including train and air travel, are often used to deliver people to customers.

Often, human trafficking victims are overlooked because many of us do not know the signs or “red flags.” To know the red flags is the first step in identifying potential victims.

## Below are four of the most common signs of human trafficking:

- ▶ They do not control their own ID or bus fare.
- ▶ Having their movement controlled or limited.
- ▶ They do not know where or how to reach their destination.
- ▶ The relationship does not seem genuine, particularly guardian and child.

If you see or witness suspicious activity report your tip, it could save someone's life.



Call 888-373-7888

OR



send a text to BEFREE.



## Bus Lines

Bus Lines is published six times a year as a service to Milwaukee County Transit System passengers.

Editors: Jacqueline Zeledon  
Keeley Gardiner

MCTS Marketing Department  
1942 North 17th Street  
Milwaukee, WI 53205



For 24-hour automated bus information, call 414-344-6711 or visit [RideMCTS.com](http://RideMCTS.com)

 @RideMCTS

 [facebook.com/RideMCTS](https://facebook.com/RideMCTS)

 @RideMCTS